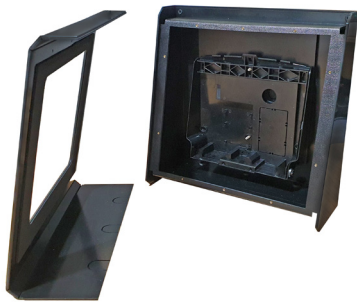
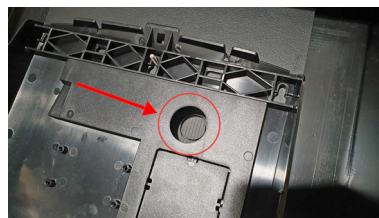
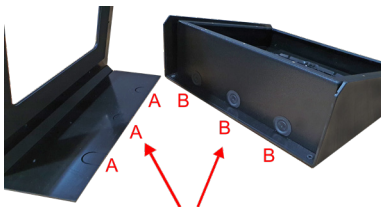


GT10/L Industrial Enclosure Installation Guide

Part number: AE-ENC-EP-GT10

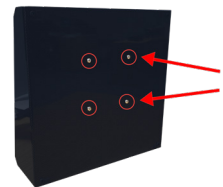


1. There are two routes for cable ingress into the enclosure.
 - Back/wall side (recommended)
 - Bottom
2. If the bottom is chosen push out one of the 3 breakout holes (A) and puncture one the 3 rubber grommets (B) for cable ingress.
3. If the back/wall entry is chosen push through the rear break out tab and fit the rubber grommet to the hole once it has been punctured for cable ingress.

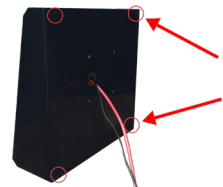


4. There are two methods for mounting the unit.

- VESA mounting points

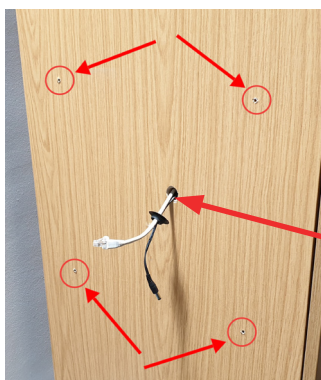


- Wall mounting points



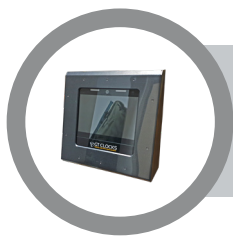
For wall mounting

- Drill holes in the wall for the 4 corner screws and cable feeds. Push grommet over the cables ready for mounting in the enclosure.
- Feed screws through grommets in the 4 corners of the enclosure and secure to the wall.



Mount cables and cable grommet into the rear of the enclosure.





GT10/L Industrial Enclosure Installation Guide

5. Offer up the terminal to the cables and make good the connections.



8. Align the tongue on the bottom edge of both sides of the front panel with the associated grooves on the back box and push them until they are **halfway** in.



11. Unit assembly complete.



6. Place the GT10 terminal towards the top of the aperture in the front of the enclosure and with the terminal tilted out at the bottom, attached the unit to the top edge of the wall box.



9. Now align the tongue and grooves at the top in the same fashion and push them home until the front is fully flush with the back.



7. Once the top edge is attached rotate the terminal down until it is fully attached to the wall box and the front glass of the terminal is parallel with the enclosure.



10. Fit the 10 x M4 screws to the front panel and screw until fully seated but be careful not to over tighten.



EMEA HQ

Email: HCM-EMEAsupport@grosvenortechnology.com
Telephone: +44 (0)1202 621711
Web: www.grosvenortechnology.com

North America HQ

sales@gtclocks.com
+1 (800) 989 5197
www.gtclocks.com

